

OSSIX™ Bone

Ossifying Collagen Sponge

For Guided Bone Regeneration (GBR) & Guided Tissue Regeneration (GTR) Procedures

Ordering Information

OSSIX Bone is currently available in the USA, Europe, Canada, Chile, Dominican Republic, Hong Kong, and Israel.

OSSIX Bone is available in 3 sizes:

Description & Size	Reference No.	Catalog No.
OSSIX Bone 5x5x5 mm (0.125 cc)	OXB0125	200125
OSSIX Bone 5x5x10 mm (0.25 cc)	OXB0250	200250
OSSIX Bone 5x10x10 mm (0.5 cc)	OXB0500	200500

Datum Dental at a Glance

Datum Dental Ltd., a subsidiary of Datum Biotech, provides innovative dental regeneration products, aiming to support and enhance the future of implantology and oral care. Its patented GLYMATRIX® core technology, a sugar cross-linking collagen biomaterial, is clinically proven in over 100 scientific publications with extensive clinical experience spanning two decades. Powered by GLYMATRIX, the OSSIX product family has enabled clinicians in hundreds of thousands of procedures worldwide to safely provide predictable, long-term results to their patients. Datum Dental continues to develop new products for GBR and GTR that simplify procedures and overcome major deficiencies in existing biomaterials through safe and transformational solutions.

Global Partners

USA:

Dentsply Sirona Implants, MIS Implants Technologies Inc., Orapharma, Inc., Sweden & Martina Inc.

Outside of USA:

Andes HSG, Bicon Singapore, Conectores Osteomaxilofaciales, H&A Systems Ltd., Hesira Med Inc., Med-Tech Esthetics LLC, Memodent B.V., MIS Implants (Belgium, Columbia, Romania, South Africa), P. Sideris & Co. E.E. - PS Team, Purgo, REGEDENT, Salugraft Dental, Sweden & Martina SpA, Syncrotech, VitalTech.

Everything we do is designed to give nature its best chance

datumdental

For more information on OSSIX regenerative products and activities in your region:

www.ossixdental.com     

© 2018 Datum Dental, Ltd. All rights reserved. The Datum Dental logo, GLYMATRIX and OSSIX are trademarks and/or registered trademarks of trademarks of Datum Dental Ltd, Datum Biotech Ltd, their subsidiaries, and/or affiliates in the United States and/or other countries. All other company or product names are the trademarks or registered trademarks of their respective holders.

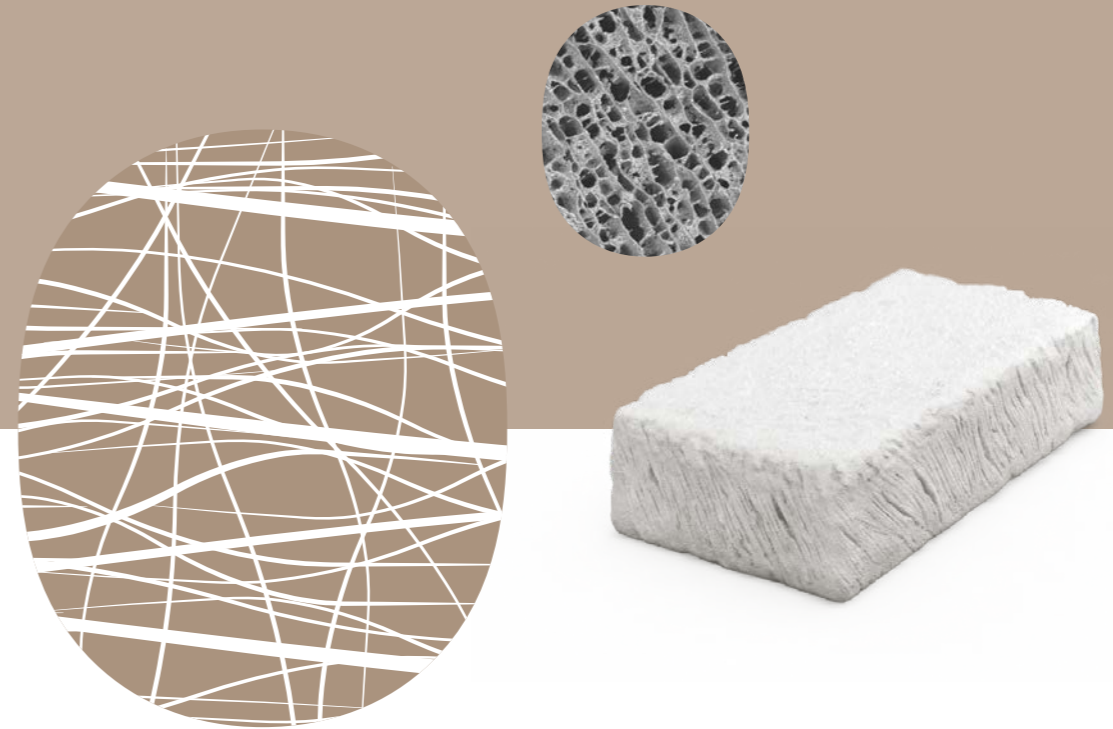
MKT0061-03

OSSIX™ Bone

Ossifying Collagen Sponge

For Guided Bone Regeneration (GBR) & Guided Tissue Regeneration (GTR) Procedures

Powered by Clinically Proven GLYMATRIX® Technology



datumdental

OSSIX™ Bone - Ossifying Collagen Sponge

What is OSSIX Bone?

OSSIX Bone is a sponge-like ossifying block for true bone formation, powered by clinically proven GLYMATRIX® technology.

- Hydroxyapatite and sugar cross-linked collagen matrix
- Provides a spacious environment for vascularization, cellular proliferation and bone maturation
- Bone forming material that contributes to the ossification process

OSSIX Bone Features & Benefits

- Easy to use
- Undergoes ossification*
- Provides true bone (no remnants)
- No migration of particles
- Cost effective for Doctor and Patient
- In socket preservation and closed sinus elevation can be used without a membrane
- Predictable results and consistent efficacy

OSSIX Bone Can Be Used

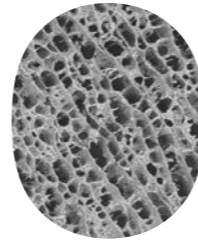
- For socket preservation following any extraction procedure
- In closed sinus augmentation procedures prior to, or in conjunction with implant placement
- In lateral and vertical bone augmentation prior to, or in conjunction with implant placement
- To correct bony defects in implants with peri-implantitis
- In periodontal bony defects around teeth

OSSIX Bone - Your New Alternative!

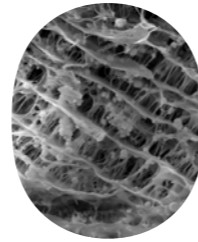
Parameter	OSSIX Bone	Autogenous Bone	Allograft (Particulate, Blocks)	Xenograft (Particulate, Blocks)	Synthetic
Safety & Biocompatibility	+++	+++	++	++	+ / ++
Bone Promotion (efficacy)	+++	+++	++	+	+
Consistent Performance	+++	+++	+	+	++
Ease of Use	+++	++	++	++	++
No Migration	+++	++	++	++	+
Clinical Evidence	++	+++	+++	+++	+++
Morbidity	+++	+	+++	+++	+++

* Alveolar Ridge Restoration Using a New Sugar Cross-linked Collagen-Hydroxyapatite Matrix in Canine L-shape Defects. Zubery Y, Goldlust A, Bayer T, Woods S, Jackson N, Soskolne W.A.

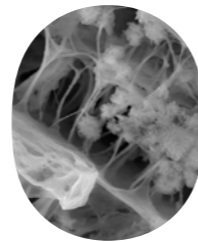
Please refer to the IFU before use and for the information on indications, contraindications, warnings and precautions.



OSSIX Bone Magnified x200



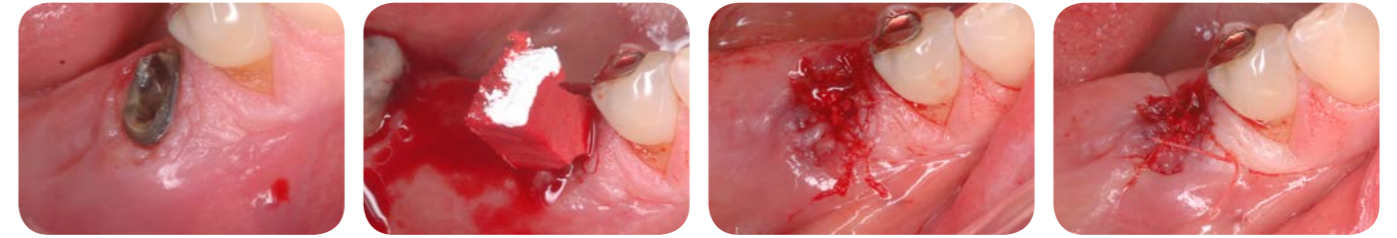
Magnified x400



Magnified x1700

Cells integrating into scaffold (collagen fibers)

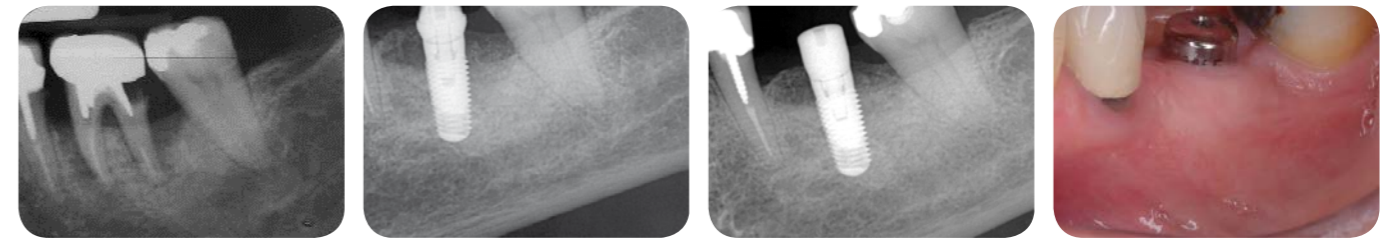
Using OSSIX Bone Ossifying Collagen Sponge



OSSIX Bone is held at the socket orifice and hydrated with patient's blood until fully soaked. In socket preservation it can be used without a membrane, tension free suturing.

Courtesy: Dr. Yuval Zubery, DMD, Periodontist, Ramat Hasharon, Israel

OSSIX Bone in a Socket Preservation Procedure

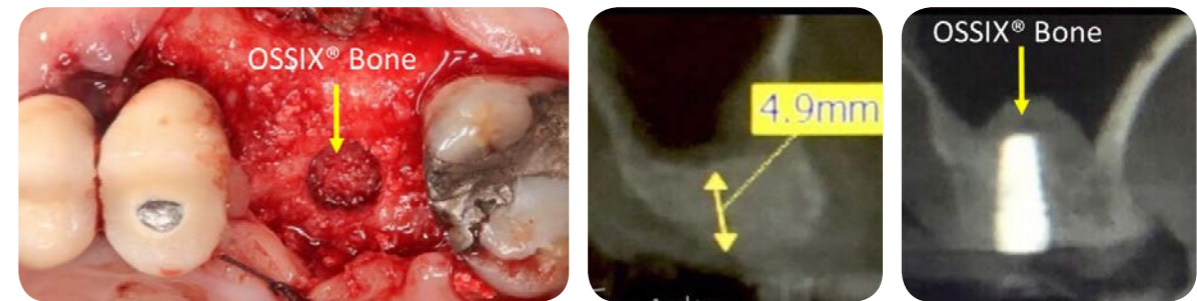


Periodontal-endodontal lesion in tooth #19 Following extraction and debridement, OSSIX Bone was placed in the socket

4 months - implant placed in newly formed bone with a healing abutment

7 months - implant is fully integrated and ready to be restored

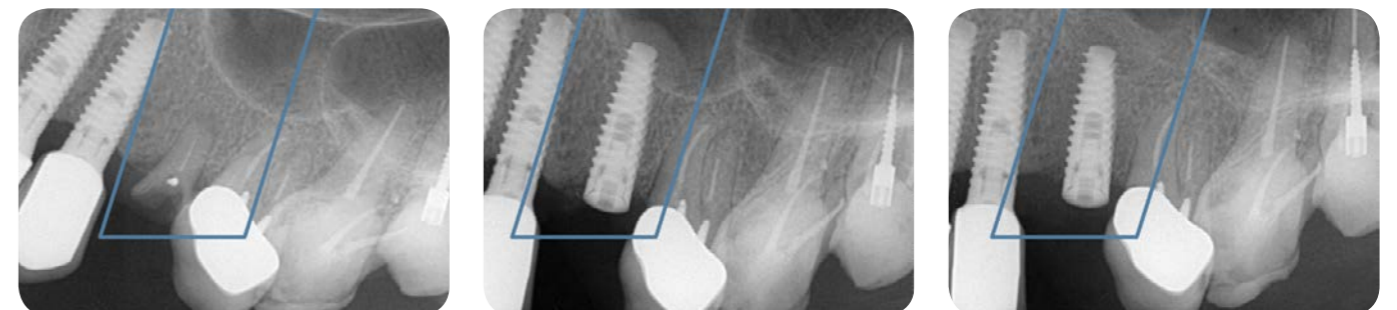
OSSIX Bone in a Trans-crestal Maxillary Sinus Elevation Procedure



Courtesy: Dr. Matthew Fien, DDS, Deerfield Beach, FL, USA Before

After

OSSIX Bone in an Osteotome Sinus Elevation Procedure



Pre extraction

At implant placement

5.5 months - implant is fully integrated